

## ADJUSTABLE STAIRCASE 可調較金屬樓梯

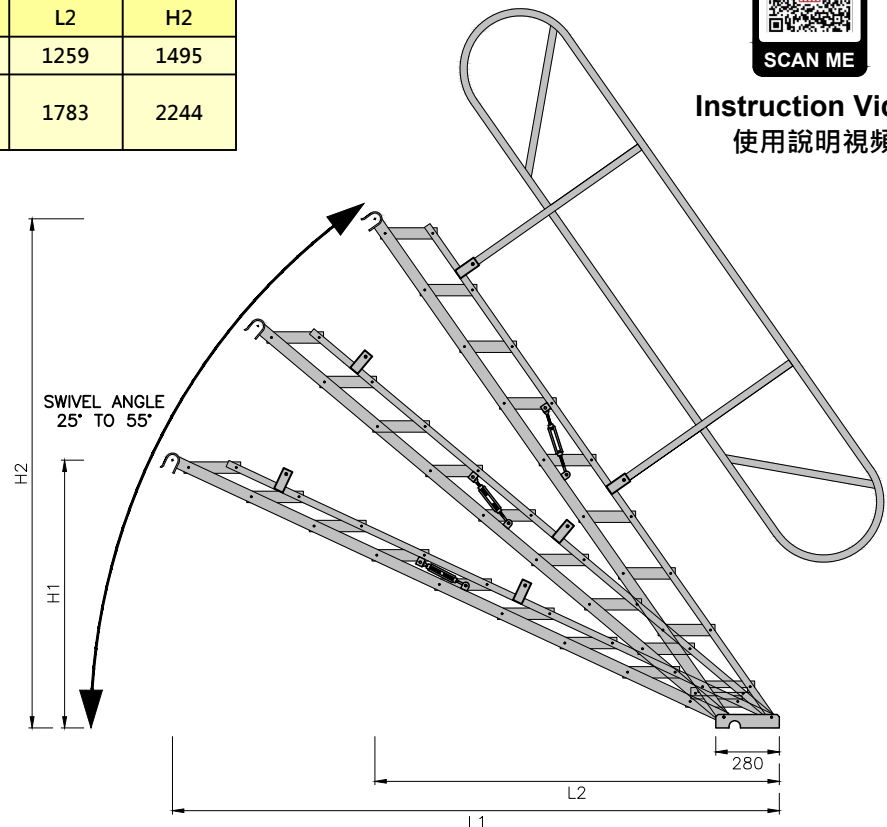
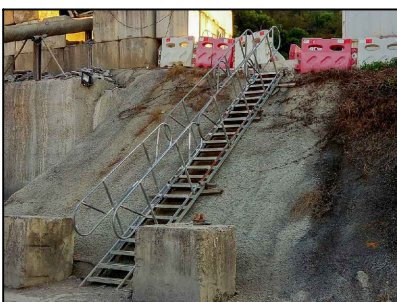
**PATENT PENDING**

Meticulously designed by CMS Engineering, this adjustable staircase allows for a quick and automatic set up for a horizontal step staircase with any existing fixed scaffold structure or materials. Its lightweight design only requires two people to handle the staircase's installation and dismantle at the construction site. These staircases are available in 6-step and 9-step configurations, but custom lengths ranging from 2-step ( 915 mm ) to 10-step ( 3045 mm ) are available upon request. For safety provisions, compatible guardrails are also designed to pair with the staircases (except custom sizes).

Angle	25°		55°	
	L1	H1	L2	H2
<b>RSC-AS6018G</b>	1846	794	1259	1495
<b>RSC-AS6027G</b>	2676	1181	1783	2244
<b>RSC-AS8027G</b>				



Instruction Video  
使用說明視頻



Item Name	Item Code	Dimension	Weight	Remark
Adjustable Staircase 可調較金屬樓梯	<b>RSC-AS6018G</b>	Step Width 600, Long 1828	40.2 kg	6 Steps
	<b>RSC-AS6027G</b>	Step Width 600, Long 2743	56.6 kg	9 Steps
	<b>RSC-AS8027G</b>	Step Width 800, Long 2743	71.5 kg	9 Steps
Guardrail 樓梯護欄	<b>RGR-AS6018S</b>	Height 967, Long 2257	11.2 kg	For RSC-AS6018G
	<b>RGR-AS6027S</b>	Height 967, Long 2862	13.2 kg	For RSC-AS6027G or RSC-AS8027G



An innovative interlocking bar-ring mechanism allows the staircases to be continuously stacked while remaining safe and stable for the operator.



Folded flat for ease of transport.



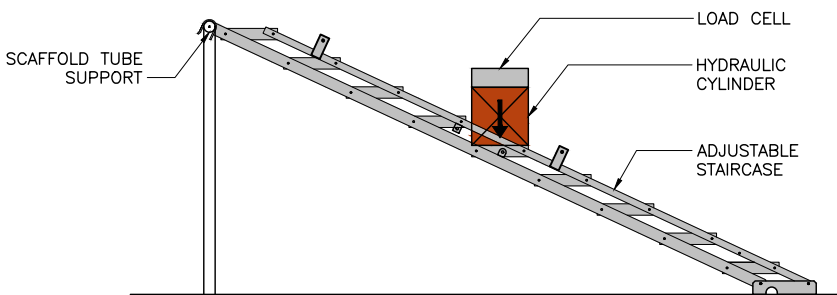
Bar-ring mechanism for installation of continuous staircases.

## ADVANTAGES 優點

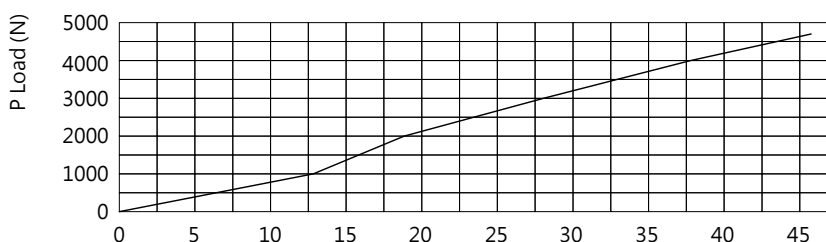
- Double guardrails are available on both sides  
兩側均可安裝護欄
- Whatever the angle of the staircase, the steps will remain horizontal  
踏級可以根據樓梯的角度保持水平
- A manual locking mechanism is designed to engage once the staircase is at the correct angle  
手動鎖設計可保證樓梯處於正確的角度
- Made of steel with a standard galvanized finish for durability  
由標準的鍍鋅鋼製成，具有耐用性
- The staircase can be folded flat for ease of transport  
樓梯可以折疊平放，便於運輸
- Staircase can be quickly and easily erected on site by two operators  
只需要兩名工人便可以在現場快速地搭建樓梯

## SAFETY NOTE

An important safety feature of this adjustable staircase is that the bottom rung governs the angle adjustment. Once the desired angle is determined, the two safety locks on both sides of the staircase need to be tightened to ensure stability.



Load Testing Setup



Load-deflection curve

CASTCO		佳力高試驗中心有限公司 CASTCO TESTING CENTRE LTD.	
Test Certificate Loading Test of Adjustable Staircase (In-house method)			
Date of issue: 23-12-2013	Page: 4 of 4 pages	Client: CASTCO Metal Scaffolding Engineering Ltd.	Client's Ref. No.: --
Drawn as requested by client:	Job title: --	Contract No.: --	
Sample Description: Adjustable Staircase RSC-A50202	Sample ID: ST013127-005-1	Type: --	
Nominal Size: Span 2745mm x width 450mm	Manufacturer: CASTCO Metal Scaffolding Engineering Ltd.	No. of copy: 9	
Laboratory Address: --	Date of sample received: 27-11-2013	Date of test: 27-11-2013	
Specimen no.	Load (kN)	Average deflection from dial gauge (mm)	
	2.0	10.33	
	3.0	15.84	
	3.0	28.05	
	4.0	37.78	
	4.7	45.73	
ST013127-005-1			
Ultimate load (kN): 6.8	Failure mode: Buckling of adjustable staircase		
Remarks: 1. Test results relate only to the specimen tested. 2. Details of the testing setup attached with this report. 3. Before and after test photos attached with this report. 4. The sample given to failure as required by the client.			
Checked by: YUNG ZAI	Certified by: CHENG CHOI LEUNG	香港新運安道前33號 33, On Kai Street, Tseung Kwan Oi, New Territories, Hong Kong 香港新運安道前33號 33, On Kai Street, Tseung Kwan Oi, New Territories, Hong Kong Tel: 2877 1138 Fax: 2877 2281 Email: castco@hastest.com Website: www.castco.com.hk	

Test report of adjustable staircase is available.

