

2022/23

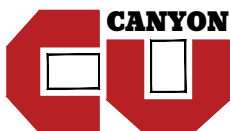
FORMWORK ACCESSORIES CATALOGUE

An extensive range of scaffold systems available
for sale & hire with tailor-made design and
technical services provided



金源通架工程有限公司
CANYON METAL SCAFFOLDING ENGINEERING LTD.

INNOVATIVE
PROFESSIONAL
QUALITY
SAFE
INTEGRITY



COMPANY INTRODUCTION & CONTENTS

CONTENTS

FORMWORK ACCESSORIES

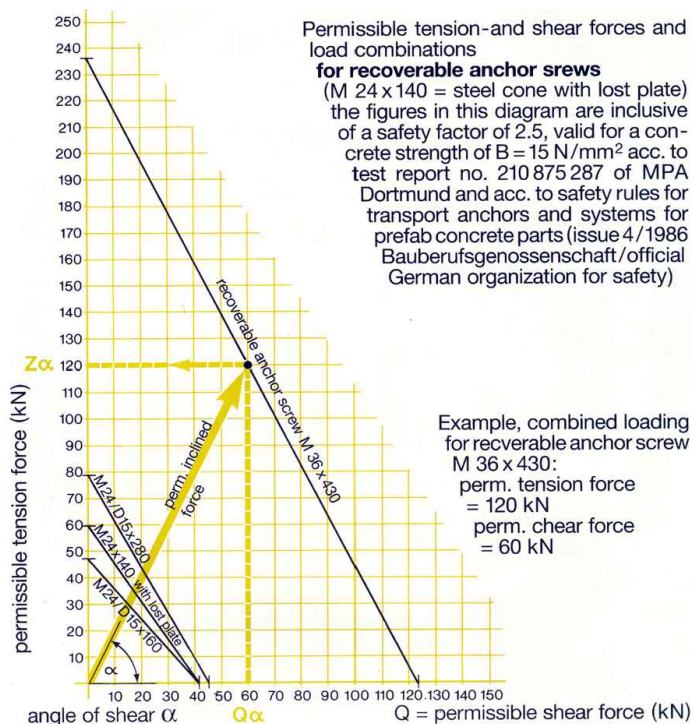
RECOVERABLE ANCHOR SCREW	5-1
RELEASE KEY	5-1
PUSH PULL PROP	5-1
STEEL SOLDIER	5-2





RECOVERABLE ANCHOR SCREW

可再用固定螺絲



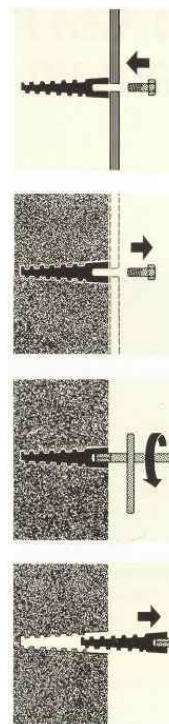
For your temporary fixing points,
lifting points for climbing forms, clam
forms, tunnel forms & single face
formwork.

This advanced design lets us
guarantee for at least 50 reuses,
allowing:

- no more wasting money on expensive stainless inserts
- no more wire strand or rebar loops to cut off
- no more parts left in the concrete

Item Code	Size
DAS-160RASA	M24 x 160
DAS-280RASA	M24 x 280

Item Code	Description
DBA-M24RK	M24 Release Key

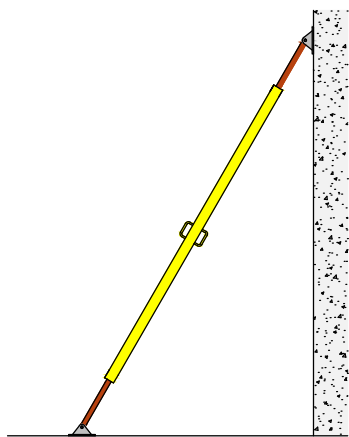


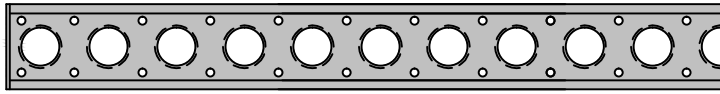
PUSH PULL PROP 伸縮支撐

- For faster plumbing and safe positioning of precast units
- A versatile, well-engineered and complete system flexible and economic
- Takes tension and compression forces
- Handles are always in workmen's reach
- 3-dimensional operating swivel end for any slope or angle by using one bolt only
- Positively safe with permissible load up to 40kN on compression & tension



Item Code	DPP-0900	DPP-1800	DPP-2600
Adjustment	900 ~ 1500 mm	1800 ~ 3200 mm	2600 ~ 4000 mm
Permissible Load at 45°	43 kN (Compression)	43 ~ 14 kN (Compression)	43 ~ 10.9 kN (Compression)
	48.5 kN (Tension)	48.5 kN (Tension)	48.5 kN (Tension)
Weight	19.0 kg	28.0 kg	40.0 kg
Outer Tube	φ76 mm	φ76 mm	φ76 mm





STEEL SOLDIER

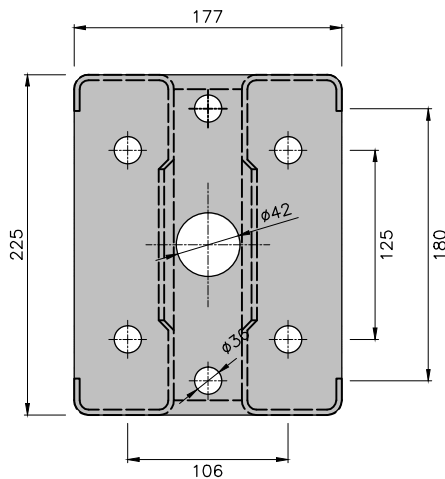
油炸鬼

STEEL SOLDIER SYSTEM

- Highly flexible with range of beam lengths and components
- Suitable for wall and slab support

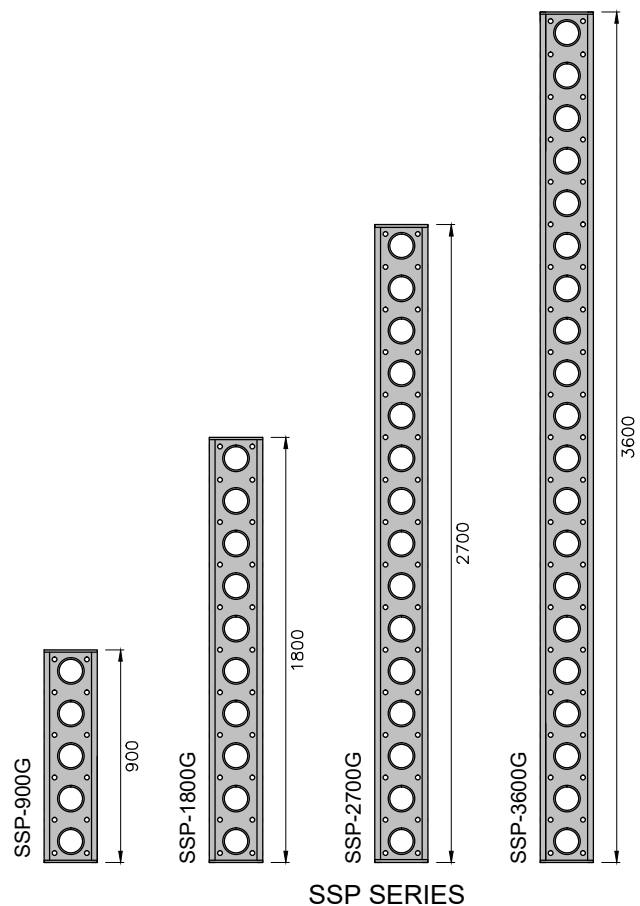
The Steel Soldier is a heavy duty structural section that can be both used as beam and column. It is designed to bring exceptional strength and versatility, making it a popular choice for wall, slab support, temporary access and platforms as well as shoring applications. Steel soldiers can be bolted end to end offering flexible lengths suited for specific uses.

* Notes: To fix steel soldier end-to-end 4 nos. M16 x 35 HT (Grade 8.8) set bolt and nuts are recommended.



Item Code	Length	Coating	Weight
SSP-3600G	3600	Galv.	77.6 kg
SSP-2700G	2700	Galv.	59.7 kg
SSP-1800G	1800	Galv.	42.0 kg
SSP-900G	900	Galv.	24.1 kg

Steel Soldier Section Properties		
	SSP Series	
Cross Sectional Area (Gross)	27.15	cm ²
Cross Sectional Area (Nett)	19.04	cm ²
Young's Modulus	205000	N/mm ²
Inertia xx	1950	cm ⁴
Inertia yy	605	cm ⁴
r xx	10.12	cm
r yy	5.64	cm
Minimum F.O.S.	1.6	
Axial Comp (Facade) ≤	300	kN
Axial Comp (Shore) ≤	100	kN
Axial Tension	120	kN
Moment of resistance	38	kNm
Moment of resistance (Joint)	10	kNm
Moment of resistance (Reinf. joint)	15	kNm
Shear (not less than)	75	kN
Shear at joint (not less than)	75	kN
Self weight	21.6	kg/m



(BLANK)

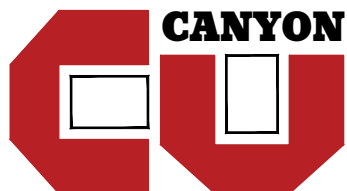


For further information, please contact: **general@canyonhk.com**

BUSINESS DEPT.: **d-b@canyonhk.com**
ENGINEERING DEPT.: **d-e@canyonhk.com**

Or visit our website:

www.canyonhk.com



**ROOM 605-606, 6/F, WESTLANDS CENTRE
20 WESTLANDS ROAD, QUARRY BAY, H.K.**

TEL: (852) 2885 9633 FAX: (852) 2567 1611