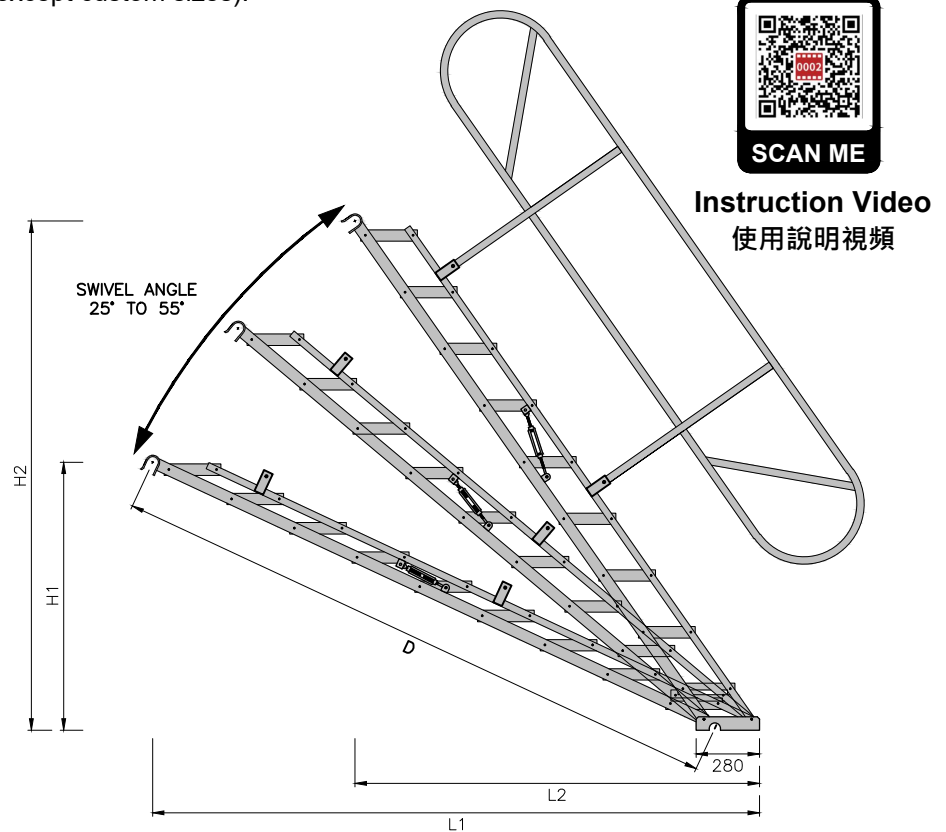
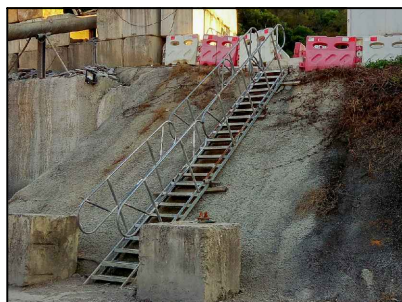


ADJUSTABLE STAIRCASE 可調較金屬樓梯

PATENT NO: HK30000557

Meticulously designed by CMS Engineering, this adjustable staircase allows for a quick and automatic set up for a horizontal step staircase with any existing fixed scaffold structure or materials. Its lightweight design only requires two people to handle the staircase's installation and dismantle at the construction site. These staircases are available in 6-step and 9-step configurations, but custom lengths ranging from 2-step (915 mm) to 10-step (3045 mm) are available upon request. For safety provisions, compatible handrails are also designed to pair with the staircases (except custom sizes).



Adjustable Staircase 可調較金屬樓梯								Handrail 樓梯扶手			
Item code	Angle	25°		55°		D	Nos. of Steps	Step Width	Weight	Item Code	Weight
		L1	H1	L2	H2						
RSC-AS6018G		1846	794	1259	1495	1828	6	600	41.4 kg	RGR-AS6018S	13.2 kg
RSC-AS6027G		2676	1181	1783	2244	2743	9		56.5 kg	RGR-AS6027S	16.4 kg
Adjustable Staircase 可調較金屬樓梯 (Customized Model, 可訂製之款式)								Handrail 樓梯扶手			
RSC-AS6006G #		741	279	559	496	608	2	600	21.2 kg	-	-
RSC-AS6009G #		1017	408	734	745	913	3		26.3 kg	-	-
RSC-AS6012G #		1294	536	909	995	1218	4		31.3 kg	-	-
RSC-AS6015G #		1570	665	1084	1245	1523	5		36.4 kg	RGR-AS6015S #	10.0 kg
RSC-AS6021G #		2123	923	1433	1745	2133	7		46.4 kg	RGR-AS6018S	13.2 kg
RSC-AS6024G #		2399	1052	1608	1995	2438	8		51.5 kg	RGR-AS6027S	16.4 kg

No existing stock available, lead time for MADE-TO-ORDER items is 6-8 weeks.



An innovative interlocking bar-ring mechanism allows the staircases to be continuously stacked while remaining safe and stable for the operator.



Folded flat for ease of transport.



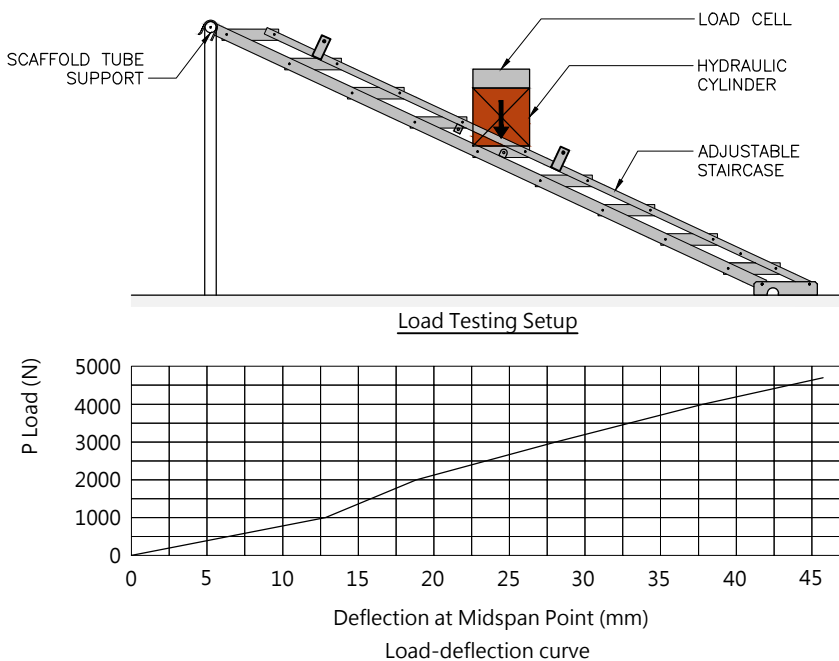
Bar-ring mechanism for installation of continuous staircases.

ADVANTAGES 優點

- Double Handrails are available on both sides
兩側均可安裝扶手
- Whatever the angle of the staircase, the steps will remain horizontal
踏級可以根據樓梯的角度保持水平
- A manual locking mechanism is designed to engage once the staircase is at the correct angle
手動鎖設計可保證樓梯處於正確的角度
- Made of steel with a standard galvanized finish for durability
由標準的鍍鋅鋼製成，具有耐用性
- The staircase can be folded flat for ease of transport
樓梯可以折疊平放，便於運輸
- Staircase can be quickly and easily erected on site by two operators
只需要兩名工人便可以在現場快速地搭建樓梯

SAFETY NOTE

An important safety feature of this adjustable staircase is that the bottom rung governs the angle adjustment. Once the desired angle is determined, the two safety locks on both sides of the staircase need to be tightened to ensure stability.



Specimen no.	Load (kN)	Average deflection from dial gauge (mm)
ST013127-005-1	1.0	10.33
	2.0	18.84
	3.0	28.05
	4.0	37.78
	4.7	45.75

Ultimate load (kN): 4.8 | Failure mode: Buckling of adjustable staircase

Remarks: 1. Test results relate only to the specimens tested.
2. Details of the testing setup attached with this report.
3. Before and after test photos attached with this report.
4. The sample gain printed in yellow as required by the client.

Checked by: YE YUNG FAI | Certified by: [Signature]

Test report of adjustable staircase is available.

