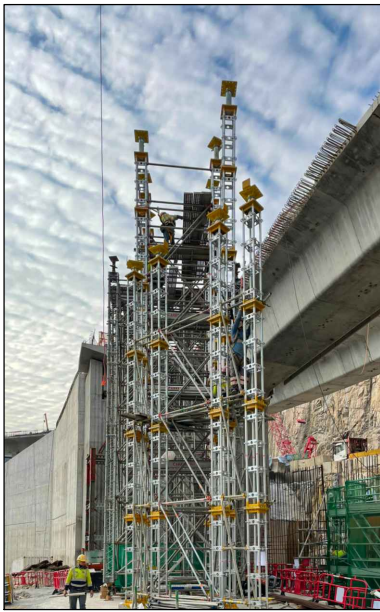


RINGLOCK GIANTSHORE

碟型組合大力頂

PATENT NO: HK30052164

Introducing Canyon's latest heavy duty supports, designed to optimize overall construction cost per unit area while withstanding a max. S.W.L. of 580 kN. The specialty of the Giantshore's design is it provides built-in standard Ringlock rosettes on the vertical tubes so that standard Ringlock horizontal and diagonal components can be conveniently used



Once the Ringlock Giantshore tower is completely erected, fine tune adjustments may be made in preparation for the bridge construction.



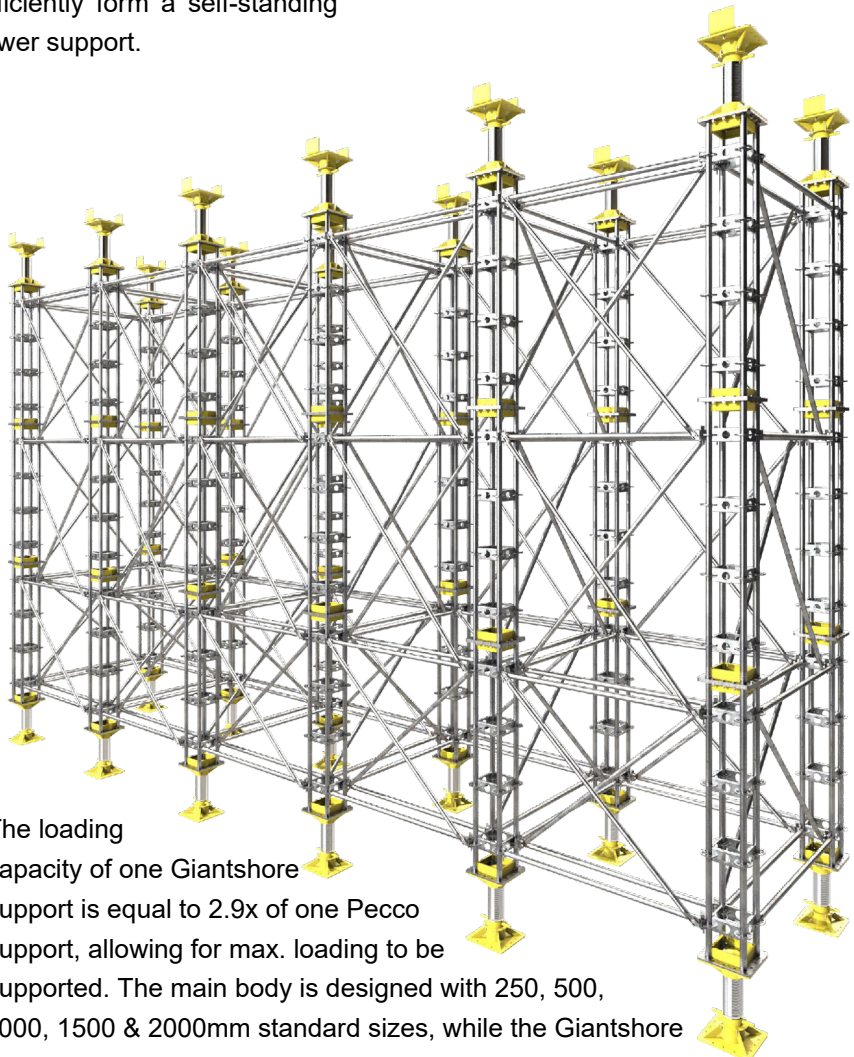
The versatility of the Ringlock Giantshore allows for standard working platform to be erected upon completion of the tower.

as connecting members (scaffold tubes and couplers may still be used for non-standard lengths). The Ringlock rosette component on the Giantshore allows for members to be connected on all four sides, which can efficiently form a self-standing tower support.



Project: Contract No. NE/2015/01 – Tseung Kwan O to Lam Tin Tunnel – Main Tunnel and Associated Works
Client: Leighton-China State Joint Venture

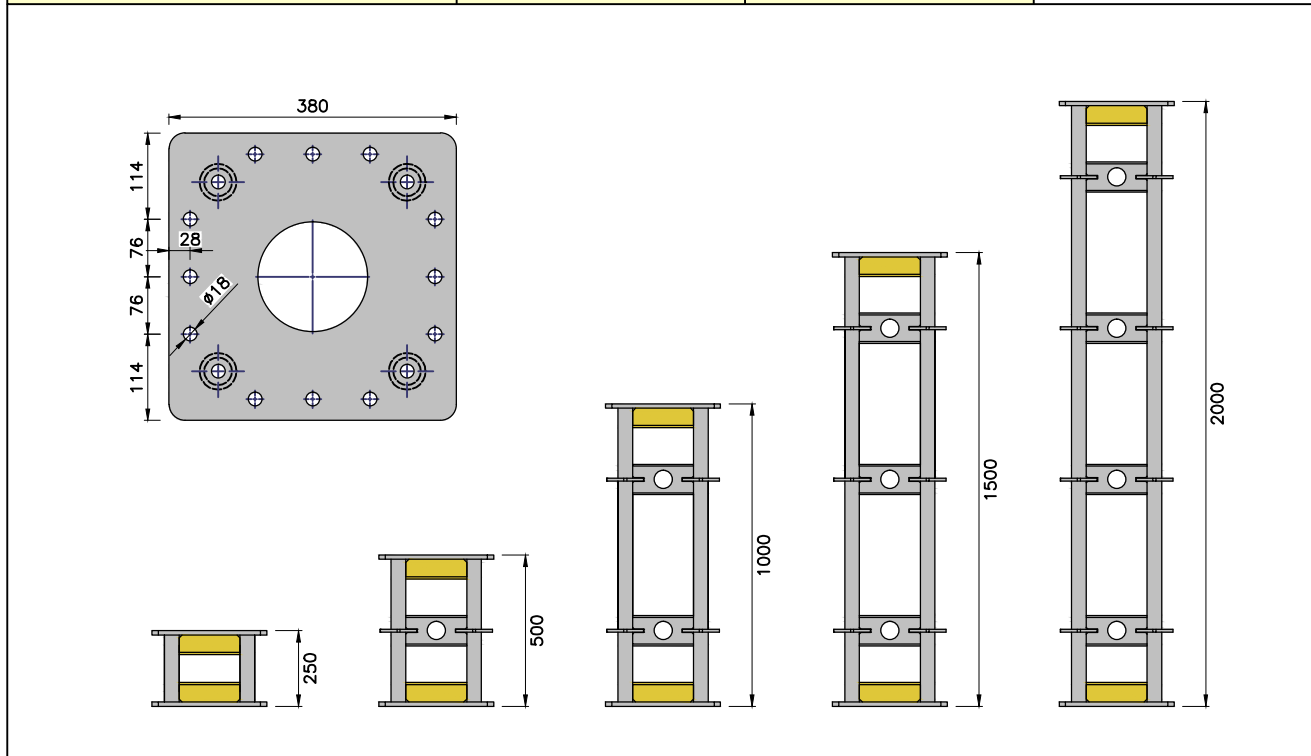
Max. Safety Working Load:
580kN per Leg
Factor of Safety: 1.65



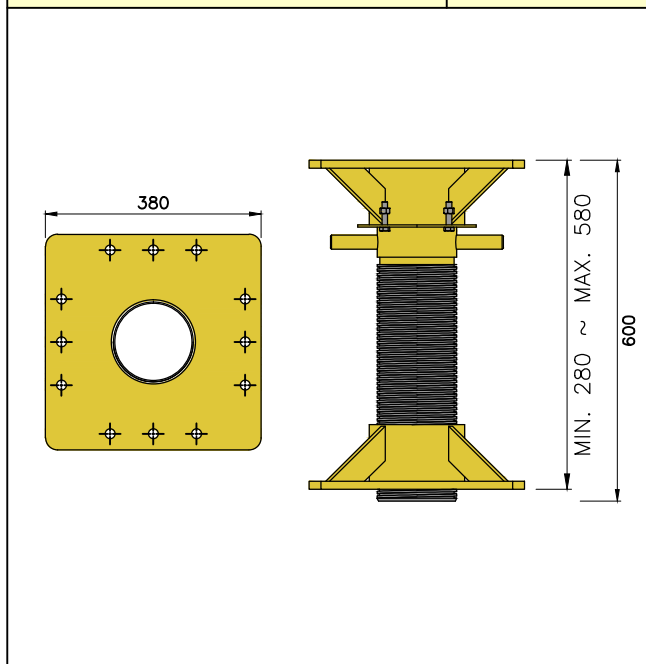
The loading capacity of one Giantshore support is equal to 2.9x of one Pecco support, allowing for max. loading to be supported. The main body is designed with 250, 500, 1000, 1500 & 2000mm standard sizes, while the Giantshore jack provides an additional adjustment of 280 ~ 580mm.



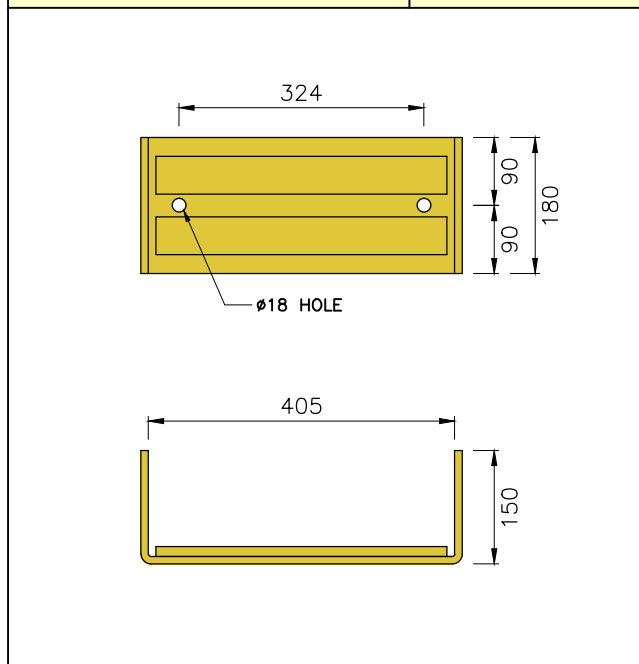
Main Body 大力頂	Height, H	Weight	Marking
RSP-GS025	250	38.7 kg	Pink / 粉紅
RSP-GS050	500	54.6 kg	Yellow / 黃
RSP-GS100	1000	71.7 kg	Green / 綠
RSP-GS150	1500	88.8 kg	Orange / 橙
RSP-GS200	2000	105.9 kg	White / 白

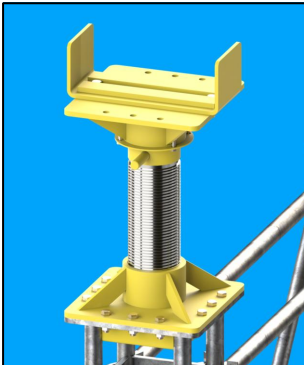


Giantshore Support Jack 大力頂橫頭	Weight
RJK-GSJ58	76.9 kg

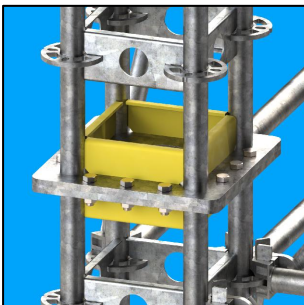


U-Head U形頭	Weight
RJK-SSU41	13.7 kg

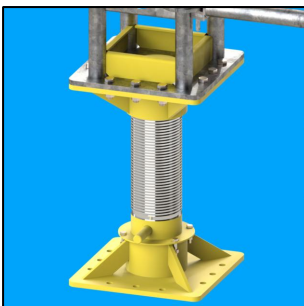




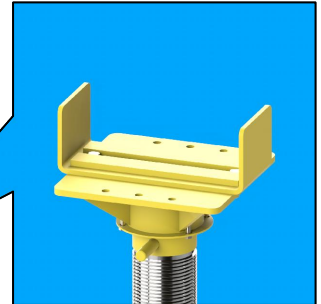
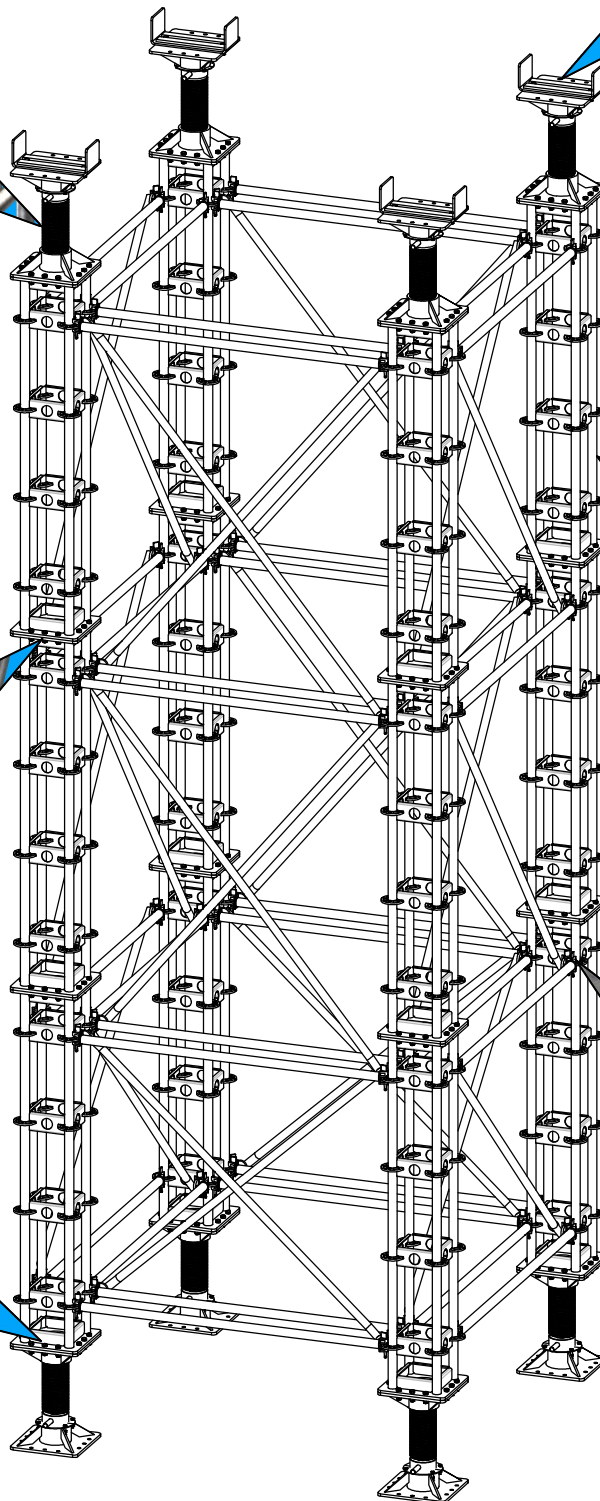
The Giantshore Jack is designed to allow for 280 ~ 580mm adjustable extension to suit the construction site's requirement; jacks should be greased before every use.



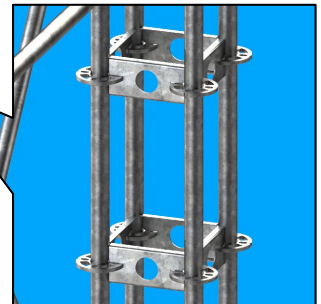
To secure end-to-end connections, 12 nos. of M16 (HT) bolts and nuts should be used; be sure to tighten before continuing erection or use.



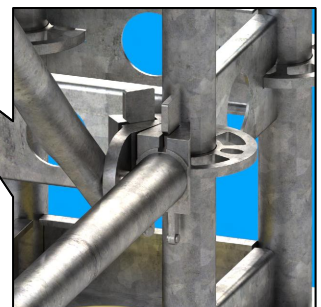
Bottom jack optional subject to site requirements. Anchor bolts fixed to ground are subject to design requirement.



The U-head shall be secured to the support jack by 2 nos. of M16 bolts and nuts, and provides clear width of 405mm for I-beam or steel bearer.

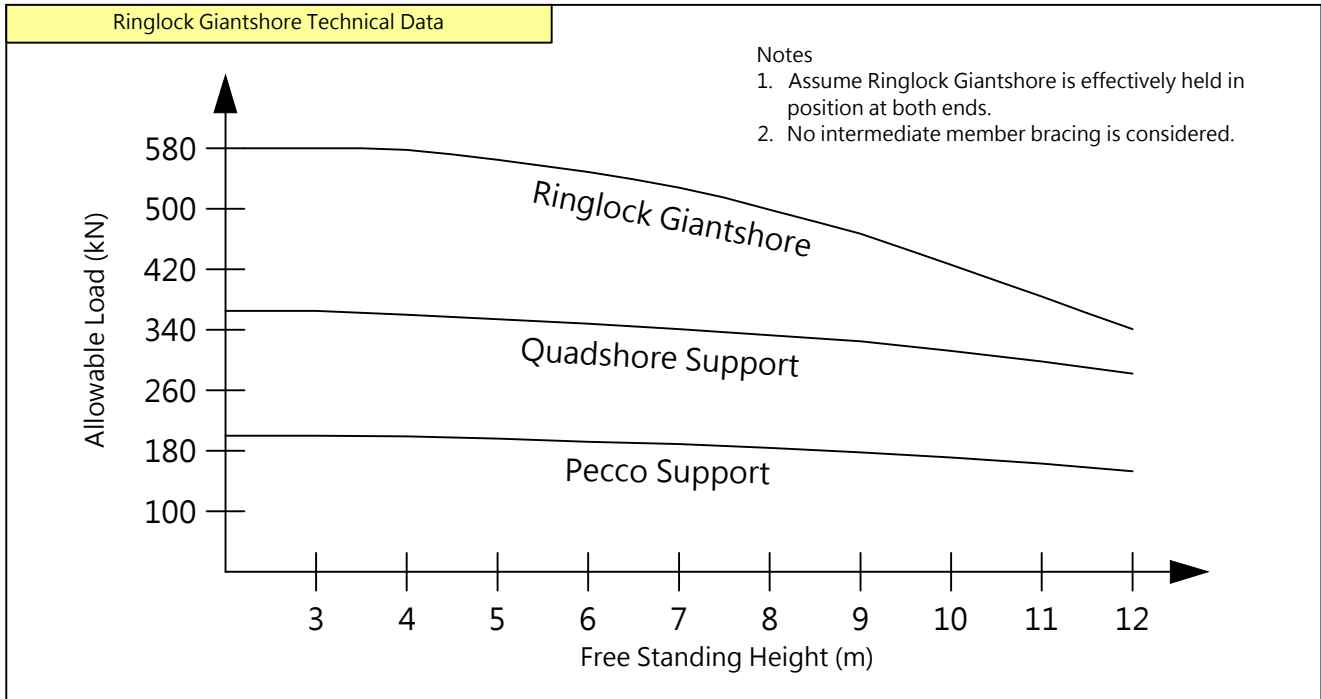


Standard Ringlock rosette spacing at 500mm provided on vertical tubes.



The Ringlock rosette design allows for both horizontal and diagonal bracing to be efficiently connected.





RINGLOCK Giantshore Body Section Properties

Cross Section Area, A	Radius of Gyration, i	Elastic Section Modulus, Z	Second Moment of Area, I
31.893cm ²	12.59cm	404.49cm ³	5,056.12cm ⁴

