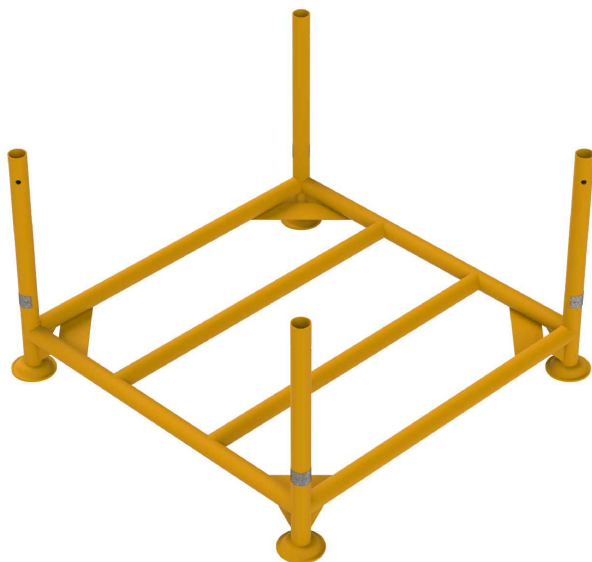


## POST STILLAGE 包裝架



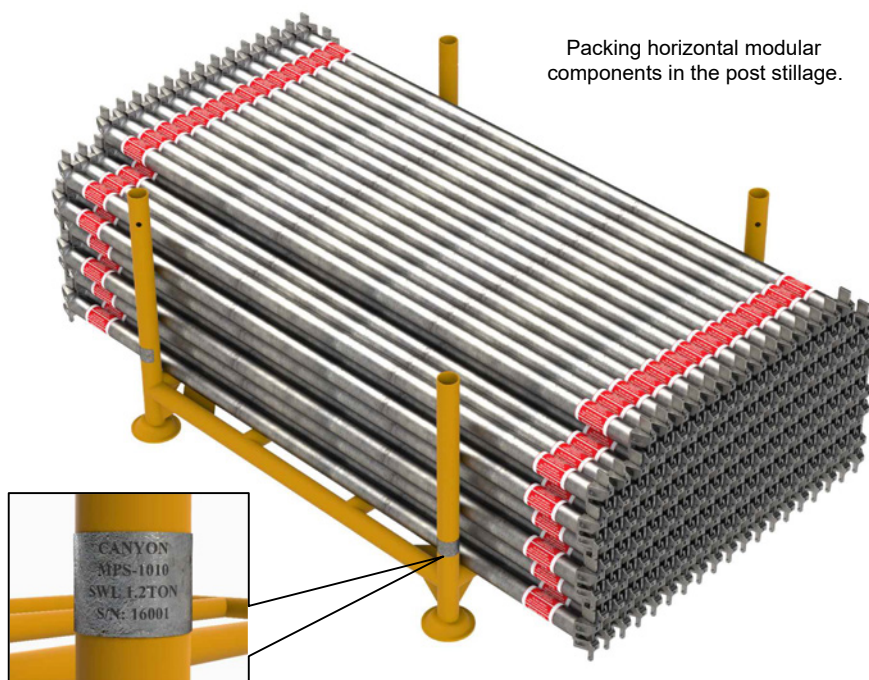
To enhance safety and provide a means of staying organized at both the site and storage yard, Canyon designed a standard sized post stillage, also known as packing pallet, for the construction industry.

### ADVANTAGES 優點

- High-grade Q345 steel and symmetrical size  
由 Q345 鋼製成及對稱尺寸
- Built-in round base plates for safe & efficient stacking  
內置圓形底盤 · 可安全有效地堆疊
- Strengthened rigidity  
增強剛性
- Loading capacity up to 1,200 kg per post stillage  
每個包裝架的負載能力高達 1,200 公斤
- Customizable metal tag for identification purposes  
可定制金屬標籤用於識別
- Recommend stacking of 6 post stillages maximum  
建議最多堆疊 6 個包裝架



Post Stillage 包裝架	Length	Width	Height	Safety Working Load	Weight
<b>MPS-1010</b>	1000	1000	650	1200 kg	28.2 kg



Packing horizontal modular components in the post stillage.



Metal tag on post stillage's leg

Sample stacking of various types of post stillages storing scaffold components of different types and sizes.

**⚠** For safety precautions, it is recommended to consider securely strapping all items stored in the Post Stillage before any means of transport (i.e. Rigging). Any stacking of post stillage combinations must be done on flat and level ground.

\* All weights stated in catalog are for reference only.  
Email : [general@canyonhk.com](mailto:general@canyonhk.com)



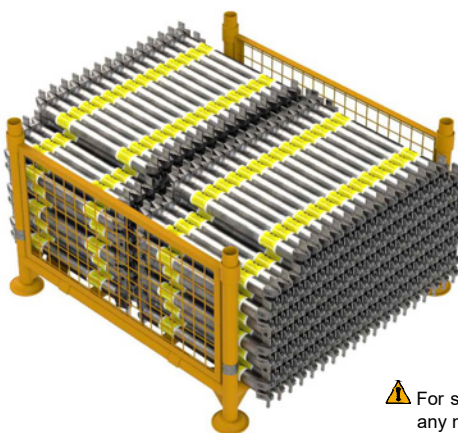
## SIDE MESH STILLAGE 側網包裝架



Exploded View of Side Mesh Stillage.

To effectively store smaller or shorter scaffold components, the Side Mesh Stillage was designed by incorporating the Post Stillage with side panels to serve as wall supports.

The Side Mesh Panel comes in one size, but in two slightly different design configurations, so that they could make different variations of a side mesh stillage.



Side Mesh Stillage Component List 側網包裝架配件清單			
Component	Item Code	Quantity	Unit Weight
<b>Side Mesh Panel</b> 包裝架側網	<b>MPS-SMP1004T</b>	2	5.8 kg
	<b>MPS-SMP1004B</b>		5.8 kg
<b>Post Stillage</b> 包裝架	<b>MPS-1010</b>	1	28.2 kg

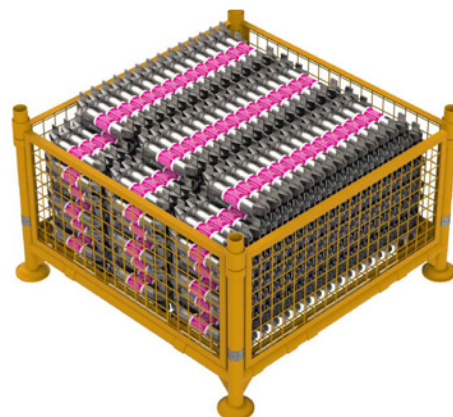
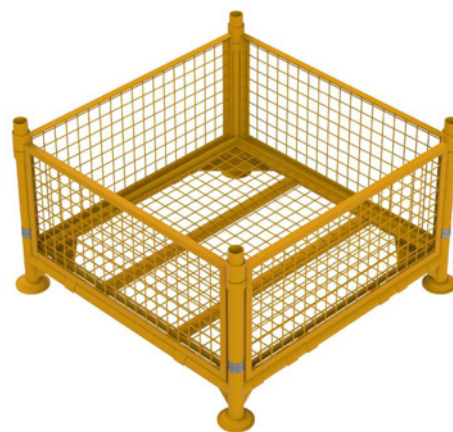
⚠ For safety precautions, all smaller items stored in the Side Mesh Stillage must be securely strapped before any means of transport. Any stacking of post stillage combinations must be done on flat and level ground.

## MESH BOX STILLAGE 網型包裝箱



For storing even smaller items, the Mesh Box Stillage was designed by combining all the post stillage components and adding a Bottom Mesh Panel to fit on the bottom of the post stillage for effective storage means. The Mesh Box Stillage can be used in conjunction of all the components together or however the items being stored require.

Exploded View of Mesh Box Stillage.



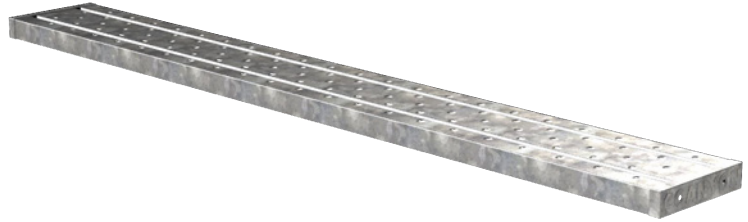
Mesh Box Stillage Component List 網型包裝架配件清單			
Component	Item Code	Quantity	Unit Weight
<b>Side Mesh Panel</b> 包裝架側網	<b>MPS-SMP1004T</b>	2	5.8 kg
	<b>MPS-SMP1004B</b>	2	5.8 kg
<b>Bottom Mesh Panel</b> 包裝架底網	<b>MPS-BMP1010</b>	1	9.3 kg
<b>Post Stillage</b> 包裝架	<b>MPS-1010</b>	1	28.2 kg

⚠ For safety precautions, items stored in the Mesh Box Stillage must not be stacked higher than the Side Mesh Panel's height. Any stacking of post stillage combinations must be done on flat and level ground.





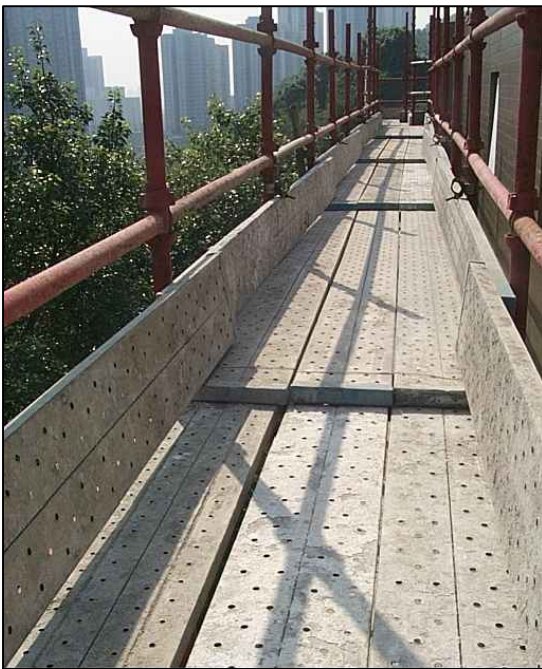
## STEEL PLANK 金屬橋板



### ADVANTAGES 優點

- Strong & durable design  
堅固耐用
- Non-flammable & fire resistant to ensure safety  
不易燃燒、更安全
- Lighter than conventional wood planks  
比傳統木板更輕便
- Non-slip & allows water to drain through  
防滑並設疏水孔

Code	Length	Width	Thickness	Sheet Thk.	Condition	Coating	Weight
<b>TSK-4000N</b>	4000mm	250mm	50mm	1.2mm	New	Galv.	17.4 kg
<b>TSK-3000N</b>	3000mm						13.1 kg
<b>TSK-2000N</b>	2000mm						8.8 kg
<b>TSK-1000N</b>	1000mm						4.7 kg
<b>TSK-4000</b>	4000mm				Used		17.4 kg
<b>TSK-3000</b>	3000mm						13.1 kg
<b>TSK-2000</b>	2000mm						8.8 kg
<b>TSK-1000</b>	1000mm						4.7 kg



### TECHNICAL SPECIFICATIONS OF STEEL PLANK

Permissible UDL at 1829 mm span	Permissible Point Load at 1829 mm span	Deflection at 150 kg
300 kg	150 kg	13.5 mm or less

Steel Plank can be used on both the Steel and Bamboo Scaffold (適合於金屬棚及竹棚使用)



The STEEL PLANK is designed to be lightweight, safe, and durable in direct response to user needs. The design of the plank is best suited for working on high-level platforms. Since it is 13% lighter than a conventional plywood board, this product is highly recommended for all construction sites.

## 1. HIGH SAFETY:

To prevent slippage, the tread surface has many holes that provide traction and allow water to drain through.

## 2. HIGH DURABILITY:

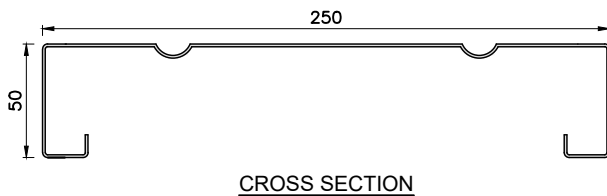
This product assures high durability through the designs of reinforced cross section and convex tread surface, pre-galvanized steel.

## 3. WIDE RANGE OF APPLICATIONS:

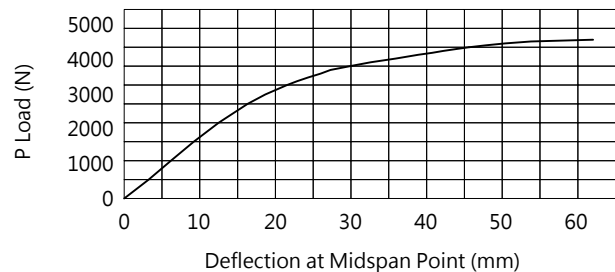
Walking passages for steel structure buildings, suspended scaffolding, toe boards, underground shield floor, working platform for scaffolding, etc.



Testing of Planks at Support Interval 1,829 mm,  
Maximum Load P: 419 kg at deflection 62.02 mm



Load-deflection curve



## SPIRAL PLANK CLIP 橋板定位梢

### ADVANTAGES 優點

- Bolt-less Installation 免螺絲安裝
- Tool-less Usage 不需要使用工具
- Cost & Time Efficient 節省成本和時間
- Available in Different Sizes 提供不同尺寸選擇
- Used in Conjunction with Plank & Tube 可配合橋板和圓管使用

Code	Tube Diameter	Plank Thickness	Weight
<b>TPN-SPPCLIP32</b>	φ32	50 mm	0.2 kg
<b>TPN-SPPCLIP42</b>	φ42.7	50 mm	0.2 kg
<b>TPN-SPPCLIP48</b>	φ48.6	50 mm	0.3 kg
<b>TPN-SPPCLIP60</b>	φ60.5	50 mm	0.3 kg



## SCAFFOLD TUBE & COUPLER

### 喉通及手扣



Scaffold Tube Section Properties

Scaffold Tube Size	Cross Section Area, A	Radius of Gyration, i	Elastic Section Modulus, Z	Second Moment of Area, I
ø48.6x4.0t	5.605cm <sup>2</sup>	1.583cm	5.781cm <sup>3</sup>	14.048cm <sup>4</sup>
ø48.3x2.3t	4.534cm <sup>2</sup>	1.599cm	4.797cm <sup>3</sup>	11.586cm <sup>4</sup>
ø48.3x2.1t	3.048cm <sup>2</sup>	1.635cm	3.374cm <sup>3</sup>	8.149cm <sup>4</sup>

Code	Diameter	Length	Coating	Weight
<b>TST-6M4.0</b>	ø48.6 x 4.0t	6.0m	Galv.	26.4 kg
<b>TST-5M4.0</b>		5.0m		22.0 kg
<b>TST-4M4.0</b>		4.0m		17.6 kg
<b>TST-3M4.0</b>		3.0m		13.2 kg
<b>TST-2M4.0</b>		2.0m		8.8 kg
<b>TST-1M4.0</b>		1.0m		4.4 kg
<b>TST-6M2.3</b>	ø48.3 x 2.3t	6.0m	Galv.	15.7 kg
<b>TST-5M2.3</b>		5.0m		13.1 kg
<b>TST-4M2.3</b>		4.0m		10.5 kg
<b>TST-3M2.3</b>		3.0m		7.9 kg
<b>TST-2M2.3</b>		2.0m		5.3 kg
<b>TST-1M2.3</b>		1.0m		2.7 kg
<b>TST-6M</b>	ø48.3 x 2.1t	6.0m	Galv.	14.4 kg
<b>TST-5M</b>		5.0m		12.0 kg
<b>TST-4M</b>		4.0m		9.6 kg
<b>TST-3M</b>		3.0m		7.2 kg
<b>TST-2M</b>		2.0m		4.8 kg
<b>TST-1M</b>		1.0m		2.4 kg

Scaffold Tube End Cap  
喉通保護套

Code **TPL-ST**



Coupler Cover  
碼仔保護套

Code **TPL-CP**



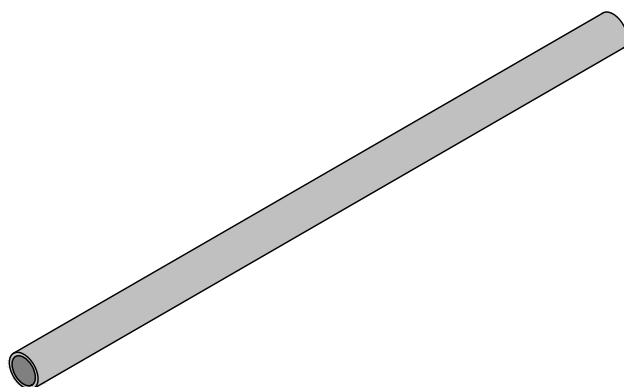
Coupler Fitting End Cap  
碼仔螺絲保護套

Code **TPL-BN**



Base Pad 底掌膠墊板

Code **TPL-BP**






Pressed Sleeve Coupler 外連接扣	
Code	<b>ACP-PSC</b>
Type	BS
Weight	1.0 kg
ø48.3 Type	
	

Pressed Double Coupler 沖壓梗扣碼仔	
Code	<b>ACP-PC1</b>
Type	BS
Weight	0.9 kg
ø48.3 Type	
	

Pressed Swivel Coupler 沖壓活扣碼仔	
Code	<b>ACP-PC3</b>
Type	BS
Weight	1.1 kg
ø48.3 Type	
	

Pressed Putlog Coupler 沖壓豬耳碼仔	
Code	<b>ACP-PPC</b>
Type	BS
Weight	0.7 kg
ø48.3 Type	
	

Forged Double Coupler 鍛造梗扣碼仔	
Code	<b>ACP-FC1</b>
Type	BS
Weight	1.1 kg
ø48.3 Type	
	

Forged Swivel Coupler 鍛造活扣碼仔	
Code	<b>ACP-FC3</b>
Type	BS
Weight	1.3 kg
ø48.3 Type	
	

Double Beam Clamp 梗扣工字扣	
Code	<b>ACP-BC1</b>
Type	BS
Weight	1.6 kg
ø48.3 Type, Claw Thk. 35 mm	
	

Swivel Beam Clamp 活動工字扣	
Code	<b>ACP-BC3</b>
Type	BS
Weight	1.6 kg
ø48.3 Type, Claw Thk. 35 mm	
	


Double Coupler 梗扣碼仔	
Code	<b>TCP-K1</b>
Type	JIS
Weight	0.7 kg
ø42.7, 48.3 Type	
	

Double Coupler 梗扣碼仔	
Code	<b>TCP-R1</b>
Type	JIS
Weight	0.8 kg
ø60.5 x ø42.7, 48.3 Type	
	

Fixed Beam Coupler 梗扣工字扣	
Code	<b>TCP-BC1</b>
Type	JIS
Weight	1.1 kg
ø48.3 Type, Claw Thk. 30 mm	
	

Tube Inner Joint Pin 喉通沖壓內接管	
Code	<b>APN-TIJP</b>
Type	JIS
Weight	0.9 kg
ø48.3 Type	
	

Swivel Coupler 活扣碼仔	
Code	<b>TCP-K3</b>
Type	JIS
Weight	0.7 kg
ø42.7, 48.3 Type	
	

Swivel Coupler 活扣碼仔	
Code	<b>TCP-R3</b>
Type	JIS
Weight	0.8 kg
ø60.5 x ø42.7, 48.3 Type	
	

Swivel Beam Coupler 活動工字扣	
Code	<b>TCP-BC3</b>
Type	JIS
Weight	1.1 kg
ø48.3 Type, Claw Thk. 30 mm	
	



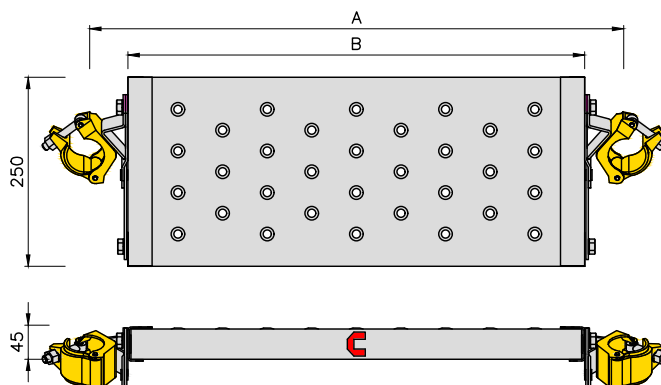


## ADJUSTABLE STEP 可調較金屬踏腳板

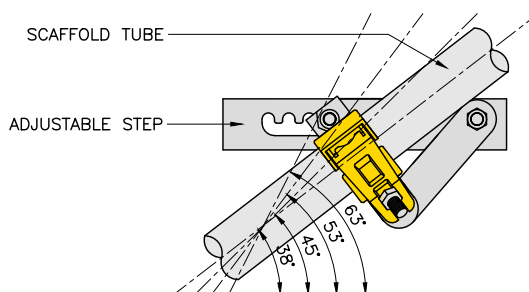
### ADVANTAGES 優點

- Strong & durable design  
堅固耐用
- Light and conventional  
身輕及方便使用
- Four fixed adjustable angle  
可調校四種角度
- Stable and safe  
穩定和安全
- Non-slip & allows water to drain through  
防滑並設疏水孔
- Quick angle adjustment  
快速調校角度

Adjustable Step 可調較金屬踏腳板	Width, A	Step Width, B	Weight	Adjustable Angle	Safety Working Load	Factor of Safety
<b>TCA-TAS6</b>	715	600	4.4 kg	63° / 53° / 45° / 38°	200 kg	2.0
<b>TCA-TAS8</b>	915	800	5.1 kg			



Instruction Video  
使用說明視頻



### APPLICATION:

- Use for any slope works & external surface of terrain, and landscape slope.
- Convenient for erection of ladder / staircase for different lengths to accommodate various environment and locations.

