

## SHEET PILE GUARD POST

### 臨時圍板護欄

PATENT NO: HK30036221

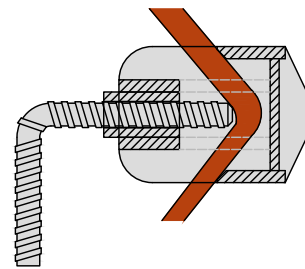
Innovative design developed by CMS Engineering, this guard post is suitable for assisting all your construction needs.



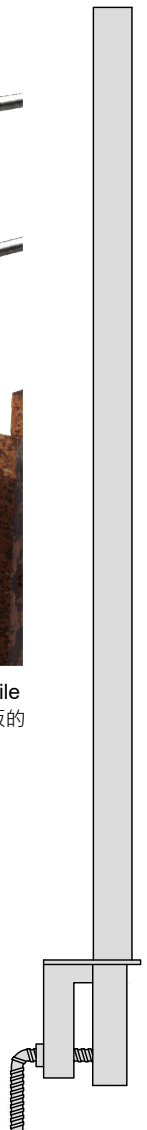
It is recommended to install the clamp on corner of sheet pile to increase rigidity for the guard post. 建議將夾具安裝在圍板的拐角處，可以增加圍板護欄的剛度。

Sheet Pile Guard Post 臨時圍板護欄			
Item Code	Length	Claw Thk.	Weight
<b>TGR-SPGP</b>	1200 mm	Max. 25 mm	6.4 kg
Sheet Pile Guard Post 臨時圍板護欄 ( <b>Customized Model</b> , 可訂製之款式)			
<b>TGR-SPGP50A #</b>	1200 mm	Max. 50 mm	6.6 kg
<b>TGR-SPGP80A #</b>	1200 mm	Max. 80 mm	6.8 kg

# No existing stock available, lead time for MADE-TO-ORDER items is 6-8 weeks.



View from top of guard post, dotted lines represent stand that clamp securely grips on; cross section of guard clamp are indicated in drawings.



SHEET PILE GUARD POST

#### ADVANTAGES 優點

- Strong and durable design 堅固耐用
- Clamp design ensures safety to hold up guard post 設計安全
- Does not require additional accessories 無小配件，方便搬運
- Can be combined with scaffold tube and coupler to construct guardrails 配合喉通及手扣可作護欄使用

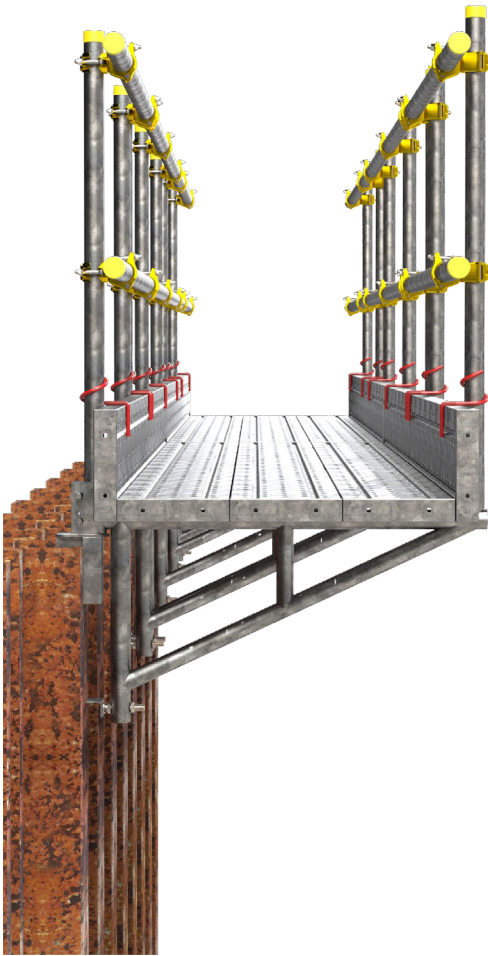


Instruction Video 使用說明視頻



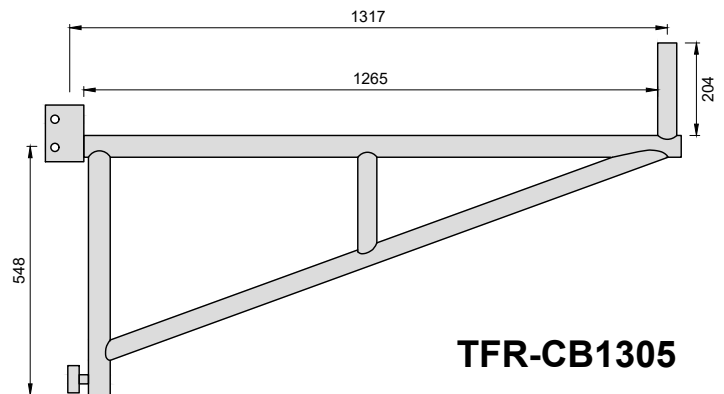
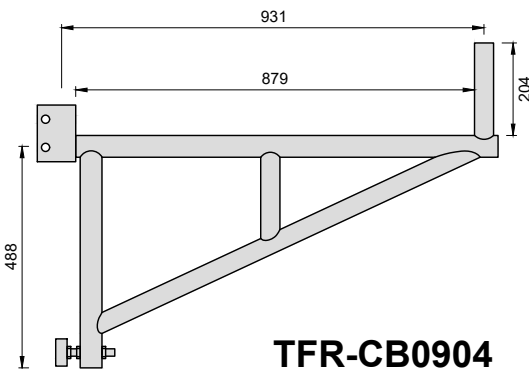
## CANTILEVER SUPPORT BRACKET

### 懸臂架



#### ADVANTAGES 優點

- Cantilever support bracket designed to hold up steel plank for walking in construction zones  
懸臂架配合橋板可作通道用
- Strong and sturdy design  
堅固耐用
- Scaffold tube joint pin embedded at the end of support bracket to install scaffold tubes as temporary guardrail  
預設駁心可安裝喉通作通道護欄
- Easy installation, no hand tools are required  
設計簡便·無須任何工具安裝
- Design of cantilever bracket allows for loading capacity of 1.5 kN/m<sup>2</sup> on the extended platform  
擴展平台在懸臂架上的設計承載能力為 1.5 kN/m<sup>2</sup>



Description	Cantilever Support Bracket 三角支撐	
	<b>TFR-CB0904</b>	<b>TFR-CB1305</b>
Item Code	<b>TFR-CB0904</b>	<b>TFR-CB1305</b>
Length	931 mm	1317 mm
Height	488 mm	548 mm
Weight	7.6 kg	9.6 kg
Safety Working Load	5 kN/m	2.5 kN/m

