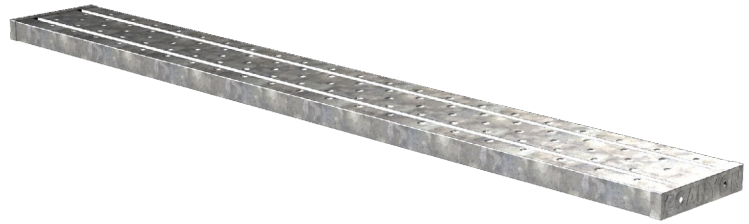


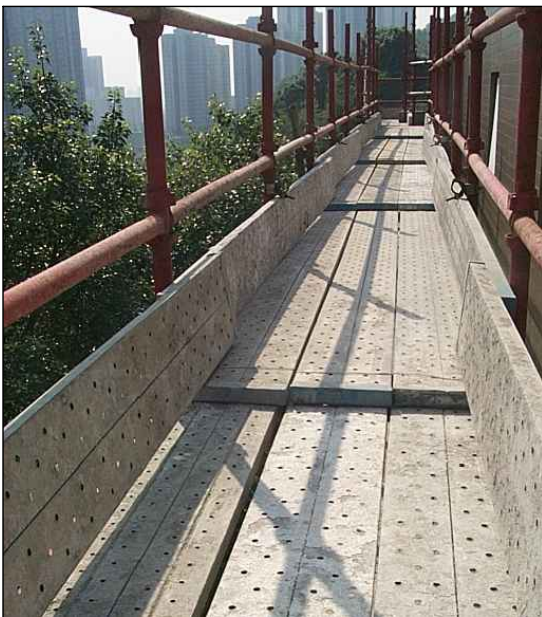
STEEL PLANK 金屬橋板



ADVANTAGES 優點

- Strong & durable design
堅固耐用
- Lighter than conventional wood planks
比傳統木板更輕便
- Non-flammable & fire resistant to ensure safety
不易燃燒、更安全
- Non-slip & allows water to drain through
防滑並設疏水孔

Code	Length	Width	Thickness	Sheet Thk.	Condition	Coating	Weight
TSK-2000	2000 mm	250 mm	50 mm	1.2 mm	New / Used	Galv.	8.8 kg
TSK-3000	3000 mm						13.1 kg
TSK-4000	4000 mm						17.4 kg

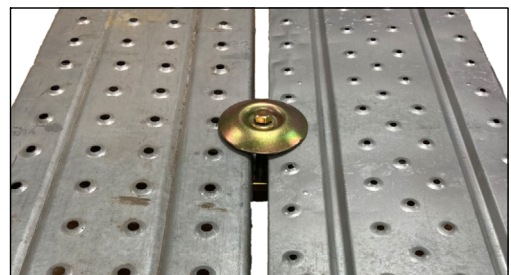


Steel Plank can be used on both the Steel and Bamboo Scaffold (適合於金屬棚及竹棚使用)

TECHNICAL SPECIFICATIONS OF STEEL PLANK

Permissible UDL at 1829 mm span	Permissible Point Load at 1829 mm span	Deflection at 150 kg
300 kg	150 kg	13.5 mm or less

Limpet Plank Coupler 丁字橋板碼仔	
Code	TCP-LPC
Type	JIS
Weight	0.4 kg
Compatible Tube Dia.	Ø48.3
Compatible Plank Thk.	50 mm



The STEEL PLANK is designed to be lightweight, safe, and durable in direct response to user needs. The design of the plank is best suited for working on high-level platforms. Since it is 13% lighter than a conventional plywood board, this product is highly recommended for all construction sites.

1. HIGH SAFETY:

To prevent slippage, the tread surface has many holes that provide traction and allow water to drain through.

2. HIGH DURABILITY:

This product assures high durability through the designs of reinforced cross section and convex tread surface, pre-galvanized steel.

3. WIDE RANGE OF APPLICATIONS:

Walking passages for steel structure buildings, suspended scaffolding, toe boards, underground shield floor, working platform for scaffolding, etc.

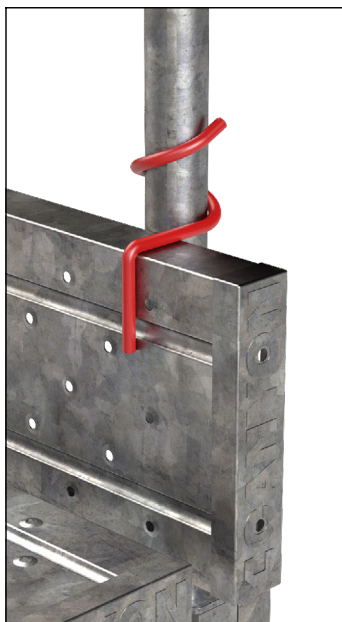
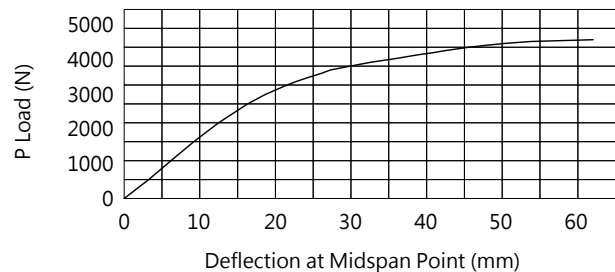


Testing of Planks at Support Interval 1,829 mm,
Maximum Load P: 419 kg at deflection 62.02 mm



Stronger Stiffener Design

Load-deflection curve



SPIRAL PLANK CLIP 橋板定位梢

ADVANTAGES 優點:

- Bolt-less Installation 免螺絲安裝
- Tool-less Usage 不需要使用工具
- Cost & Time Efficient 節省成本和時間
- Available in Different Sizes 提供不同尺寸選擇
- Used in Conjunction with Plank & Tube 可配合橋板和圓管使用

Code	Tube Diameter	Plank Thickness	Weight
TPN-SPPCLIP48	Ø48.6	50 mm	0.3 kg

