


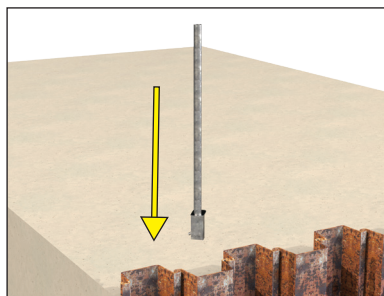
INSTRUCTION MANUAL

SHEET PILE EDGE PROTECTION SYSTEM

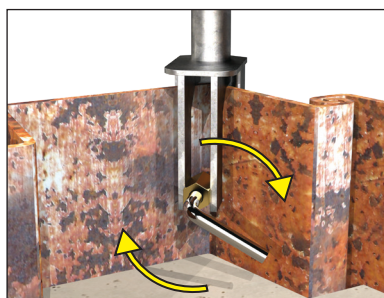
SPECIFICATION

 Instruction Video					
Item Code	TGR-SPGP	TGR-SPGP50A	TGR-SPGP80A	TFR-CB0904	TFR-CB1305
Product weight	6.4 kg	6.6 kg	6.8 kg	7.6 kg	9.6 kg
Max. claw thickness	30 mm	50 mm	80 mm	-	-
Guard post height	1,200 mm			-	-
Extended platform width	-			879 mm	1,265 mm
Safety working load	Horizontal point load 0.3 kN at top end of guard post			2.5 kN/m	5 kN/m

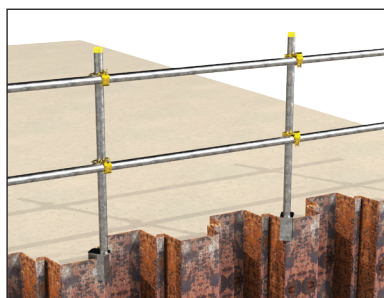
INSTRUCTIONS (GUARDRAIL POST)



Step A1. Prepare to install the Sheet Pile Guard Post by inserting the claw vertically on the sheet pile wall.

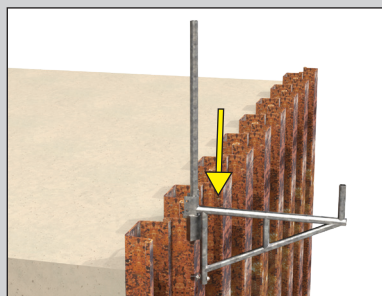


Step A2. Once the claw is clipped onto the sheet pile wall, secure Guard Post by turning the handle in the clockwise direction.

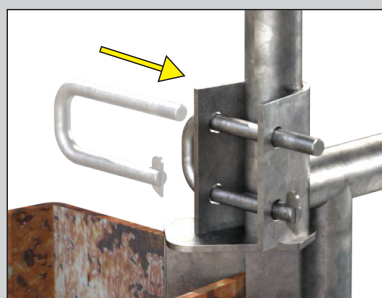


Step A3. Repeat Steps A1-A2 for remaining Guard Posts & Install respective accessories to complete guardrail setup.

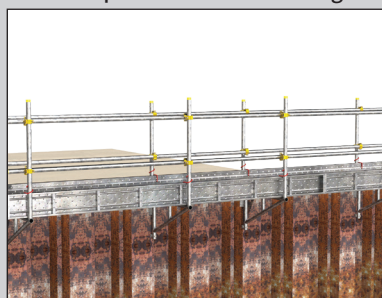
INSTRUCTIONS (SUPPORT BRACKET)



Step B1. Complete Steps A1-A2, attach a Cantilever Bracket to the top of the Sheet Pile Guard Post.



Step B2. Insert the attached U-lock in the respective holes to hold the bracket in place; once U-lock is inserted, turn the latch flat to prevent from detaching.



Step B3. Repeat above steps and install corresponding scaffold accessories to complete an edged-protected walkway on a sheet pile wall.

BEFORE USE

- Properly store the sheet pile guard post and support bracket to prevent any damage during transport.
- Verify the sheet pile guard post and support bracket are suitable for the task.
- Inspect the sheet pile guard post or support bracket upon delivery. Perform visual inspection to ensure materials are not damaged and safe to use.
- Ensure materials are properly stored to prevent damage.
- Do not modify the sheet pile guard post and support bracket.

POSITIONING & ERECTING THE SHEET PILE EDGE PROTECTION SYSTEM

- All workers must wear proper safety equipment, i.e. safety helmets, protective gloves and safety harness.
- Any locking devices shall be verified to be fully secured before use.
- The support bracket must be properly secured to the sheet pile guard post before use.

USING THE SHEET PILE EDGE PROTECTION SYSTEM

- The sheet pile guard post is designed according to BS EN 13374:2013 Class A, providing resistance to static loads only.
- The sheet pile edge protection system is designed with the consideration of:
 - Supporting a person leaning on the protection or providing a handhold when walking beside it.
 - Collectively stopping a person who may be walking or falling towards the protection.
- The extended platform shall only be used for safe access.
- Do not use the extended platform if contaminated, e.g. with wet paint, mud, oil, snow, etc.

Document Ref. : IM_0002/A/2007

Date : 01 JULY 2020

Further Information
Tel: (852) 2885 9633

THE INFORMATION ON THIS INSTRUCTION MANUAL REMAINS THE PROPERTY OF CANYON METAL SCAFFOLDING ENGINEERING LIMITED AND IS NOT TO BE REPRODUCED WITHOUT WRITTEN PERMISSION. CANYON RESERVES THE RIGHT TO AMEND THIS MANUAL AT ANY TIME WITHOUT PRIOR NOTICE. CHECK CANYON'S WEBSITE BELOW TO ESTABLISH ITS VALIDITY AND/OR OBTAIN THE MOST UPDATED VERSION.

general@canyonhk.com

www.canyonhk.com